

MILFORD PLAZA

143 - 211 CHERRY STREET | MILFORD, CT 06460

AVAILABLE 1,748 SF - 50,306 SF + PAD WITH DRIVE THRU

ANCHORED BY



BIG BOX OPPORTUNITY REASONABLE DIVISIONS CONSIDERED

PROPERTY INFORMATION

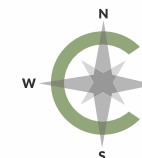
- Over 900 parking spaces
- Located within dominant retail corridor, anchored by the Connecticut Post Mall
- Milford Plaza is easily accessed by I-95 within 1/2 mile
- Excellent visibility, pylon signage, and signalized entrance
- Traffic Count: 12,000 vehicles per day

AVAILABLE SPACE

- Space 08: 50,306 SF
- Space 12: 2,680 SF
- Space 16: 1,748 SF
- Space 17: 2,890 SF
- PAD w/ Drive Thru: 2,500 SF

AREA DEMOGRAPHICS

2023 DEMOGRAPHICS	1 MILE	3 MILE	5 MILE
POPULATION	7,005	46,035	108,090
MEDIAN HH INC	\$111,603	\$111,959	\$110,384
AVERAGE HH INC	\$157,053	\$147,967	\$142,158



CHARTER
REALTY

www.CharterRealty.com

FOR MORE INFORMATION CONTACT:

PETER H. LEVINE | 203.683.1567 | Peter@CharterRealty.com

MILFORD PLAZA

143 - 211 CHERRY STREET | MILFORD, CT 06460

TENANTS / AVAILABILITY

#	TENANT	Sq. Ft.
01	St. Vincents Health & Wellness	5,000
02	Mathnasium	2,000
03	Dental Office	3,581
04	Edible Arrangements	1,800
05/06	Kidsense	1,800
07	School of Rock	3,500
08	BOB'S - Can Be Made Available	50,306
09	Old Street Dim Sum and Hot Pot	5,500
10	Dollar Tree	15,000
11	Planet Fitness	19,264
12	Available	2,680
13	Title Boxing Club	2,800
14	UPS	1,800
15	Whale Tea	1,334
16	Available	1,748
17	Available	2,890
18	Cloud 9 Day Spa	978
19	Barosa Indian Kitchen & Bar	3,000
20	G Mart	58,895
PAD	Available	2,500



Available
 Lease Out
 Occupied

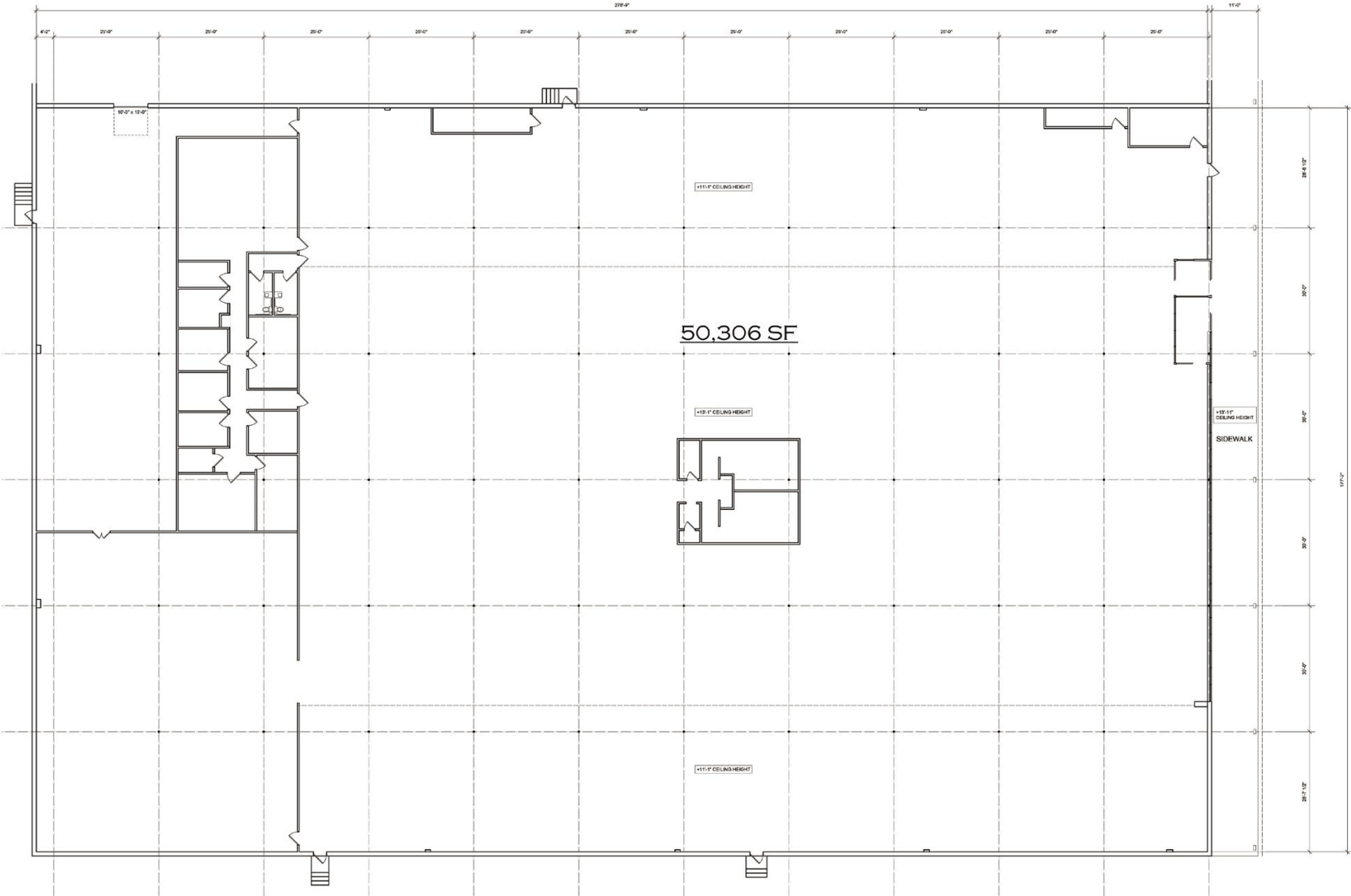


CHARTER REALTY

Information contained in this document has been reviewed and approved by Charter Realty; however, errors sometimes occur. Charter disclaims any warranty of any kind, expressed or implied, as to any matter whatsoever relating to this service. In no event shall Charter be liable for any indirect, special, incidental or consequential damages arising out of any use of or reliance on any content or materials contained herein.

MILFORD PLAZA

143 - 211 CHERRY STREET | MILFORD, CT 06460

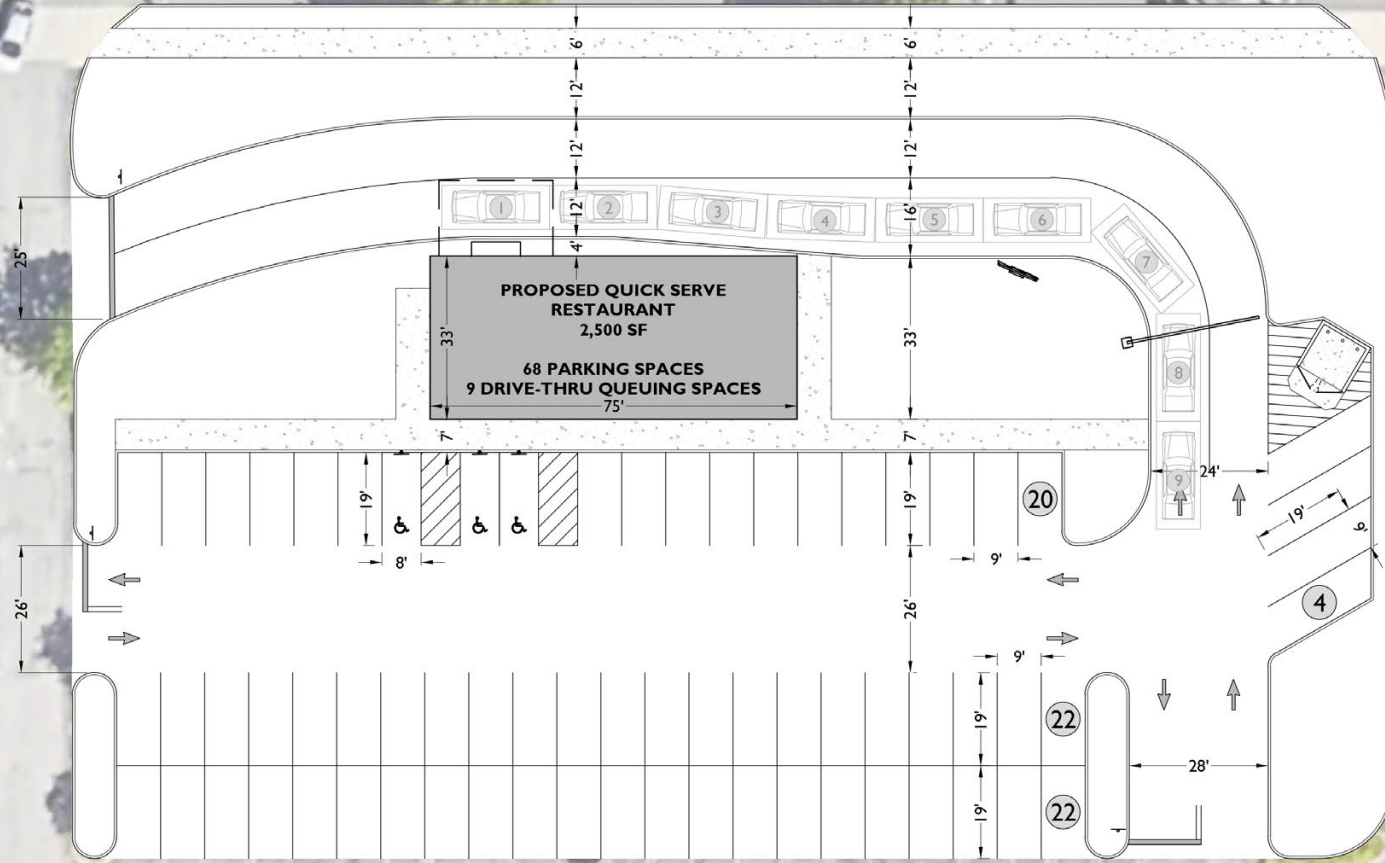


CHARTER REALTY
Information contained in this document has been reviewed and approved by Charter Realty; however, errors sometimes occur. Charter disclaims any warranty of any kind, expressed or implied, as to any matter whatsoever relating to this service. In no event shall Charter be liable for any indirect, special, incidental or consequential damages arising out of any use of or reliance on any content or materials contained herein.

MILFORD PLAZA

143 - 211 CHERRY STREET | MILFORD, CT 06460

CHERRY STREET



CHARTER REALTY

Information contained in this document has been reviewed and approved by Charter Realty; however, errors sometimes occur. Charter disclaims any warranty of any kind, expressed or implied, as to any matter whatsoever relating to this service. In no event shall Charter be liable for any indirect, special, incidental or consequential damages arising out of any use of or reliance on any content or materials contained herein.

MILFORD PLAZA

143 - 211 CHERRY STREET | MILFORD, CT 06460

TRADE AREA DEMOGRAPHICS

1 MILE RADIUS:



Total Population: **7,005**

Households: **3,107**

Daytime Population: **9,961**

Median Age: **45.6**



Average Household Income: **\$157,053**

Median Household Income : **\$111,603**

3 MILE RADIUS:



Total Population: **46,035**

Households: **19,974**

Daytime Population: **46,784**

Median Age: **45.6**



Average Household Income: **\$147,967**

Median Household Income : **\$111,959**

5 MILE RADIUS:



Total Population: **108,090**

Households: **45,159**

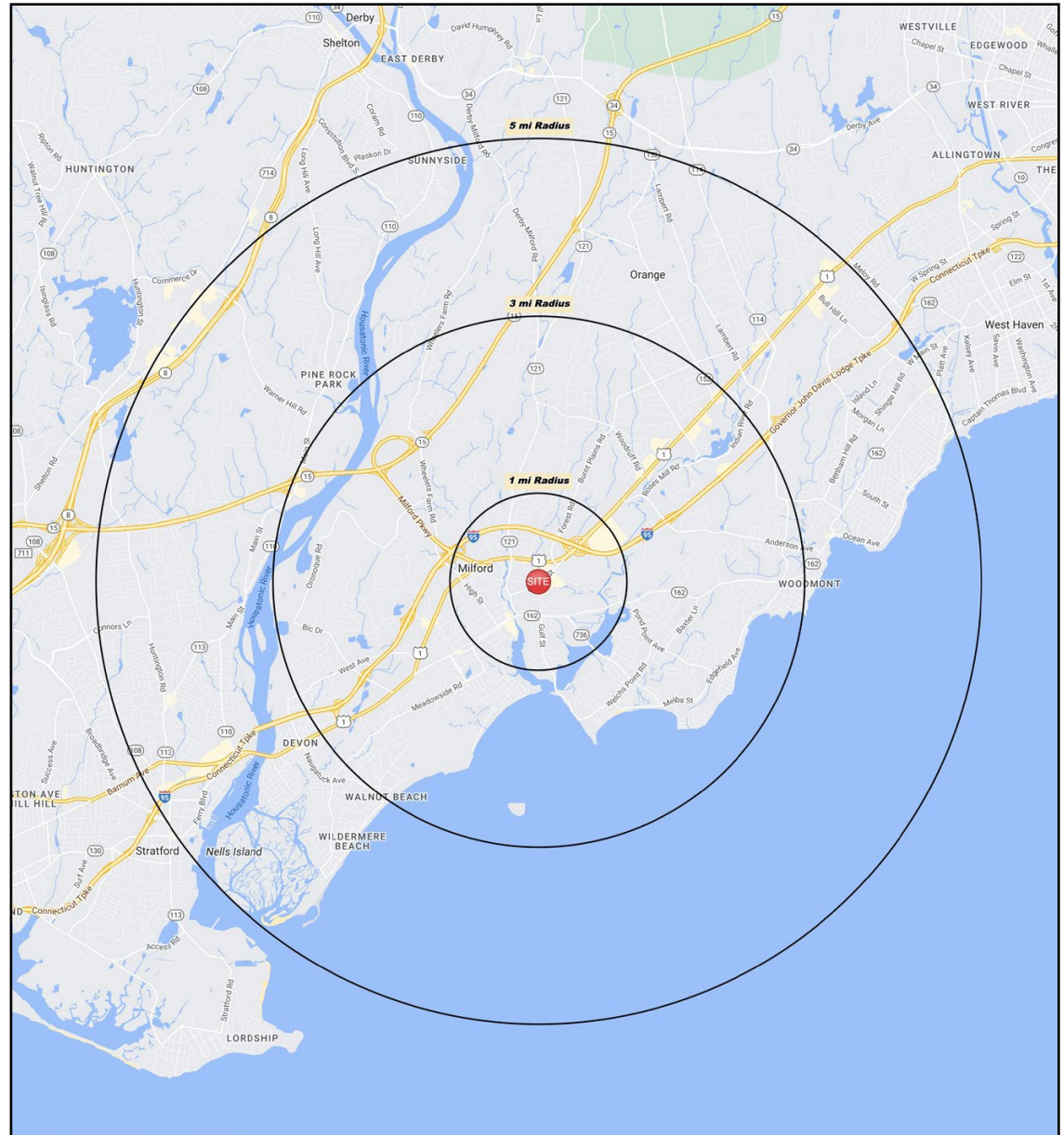
Daytime Population: **99,736**

Median Age: **45.4**



Average Household Income: **\$142,158**

Median Household Income : **\$110,384**



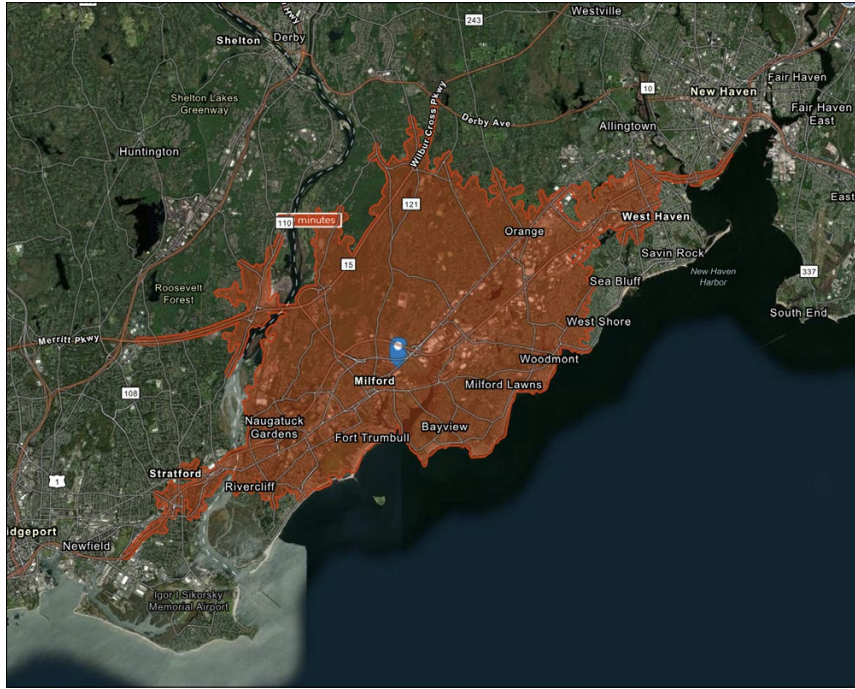
CHARTER REALTY

Information contained in this document has been reviewed and approved by Charter Realty; however, errors sometimes occur. Charter disclaims any warranty of any kind, expressed or implied, as to any matter whatsoever relating to this service. In no event shall Charter be liable for any indirect, special, incidental or consequential damages arising out of any use of or reliance on any content or materials contained herein.

MILFORD PLAZA

143 - 211 CHERRY STREET | MILFORD, CT 06460

10 MINUTE DRIVE TIME



KEY FACTS

75,170

Population

\$95,452

Median Household Income

45.3

Median Age

85,861

Daytime Population

TAPESTRY SEGMENTS

Pleasantville <i>5,405 Households</i>	Parks & Rec <i>4,584 Households</i>	Golden Years <i>3,775 Households</i>
Socioeconomic Traits 66% college educated. Higher labor force participation rate. Many professionals in finance, information/ technology, education, or management.	Socioeconomic Traits More than half of the population is college educated. This is a financially shrewd market with a diverse workforce.	Socioeconomic Traits Independent, active seniors nearing the end of their careers or already in retirement. Older market w/ Median age of 52. Nearly 32% of residents aged 65 or older.
Household Types Older married-couple families, more w/o children under 18, but many w/ children over 18. years	Household Types Married couples, approaching retirement age.	Household Types Single-person households and married-couple families w/ no children.
Typical Housing Single Family	Typical Housing Single Family	Typical Housing Single Family; Multi-units

TOTAL RETAIL SALES

Includes F&B



\$873,502,415

EDUCATION

Bachelor's Degree or Higher



45%

OWNER OCCUPIED HOME VALUE

Average



\$406,222

ANNUAL HOUSEHOLD SPENDING

\$4,310

Eating Out

\$2,596

Apparel & Services

\$7,973

Groceries

\$303

Computer & Hardware

\$8,472

Health Care



CHARTER REALTY

Information contained in this document has been reviewed and approved by Charter Realty; however, errors sometimes occur. Charter disclaims any warranty of any kind, expressed or implied, as to any matter whatsoever relating to this service. In no event shall Charter be liable for any indirect, special, incidental or consequential damages arising out of any use of or reliance on any content or materials contained herein.

MILFORD PLAZA

143 - 211 CHERRY STREET | MILFORD, CT 06460



CHARTER REALTY

Information contained in this document has been reviewed and approved by Charter Realty; however, errors sometimes occur. Charter disclaims any warranty of any kind, expressed or implied, as to any matter whatsoever relating to this service. In no event shall Charter be liable for any indirect, special, incidental or consequential damages arising out of any use of or reliance on any content or materials contained herein.

MILFORD PLAZA

143 - 211 CHERRY STREET | MILFORD, CT 06460



CHARTER REALTY

Information contained in this document has been reviewed and approved by Charter Realty; however, errors sometimes occur. Charter disclaims any warranty of any kind, expressed or implied, as to any matter whatsoever relating to this service. In no event shall Charter be liable for any indirect, special, incidental or consequential damages arising out of any use of or reliance on any content or materials contained herein.

MILFORD PLAZA

143 - 211 CHERRY STREET | MILFORD, CT 06460

★ SITE



LOFT *Massage Envy* **WHOLE FOODS MARKET**
chico's **carter's** **ETHAN ALLEN**
the paper store **BANANA REPUBLIC** **JOS. A. BANK**

COSTCO WHOLESALE

HOBBY LOBBY

Bowlero

Panera BREAD **verizon**

BIG LOTS! **Michaels** **McDonald's**
SALLY BEAUTY **Advance! Auto Parts!**

DXL MENS APPAREL **OLD NAVY**
ASHLEY

STAPLES **BARNES & NOBLE**
JO-ANN **Marshalls**
Marshalls **STOP & SHOP**
five BELOW **Walmart**
PETCO **GOLF GALAXY** **SONIC**

ShopRite **CVS**
Total Wine & MORE

Target **DICK'S SPORTING GOODS** **LA FITNESS**
IMAX THEATRE **CINEMARK**
D&B RESTAURANTS **macy's** **JCPenney**

Lowe's

ALDI

SCHOOL of ROCK **St. Vincent's Medical Center** **Planet Fitness** **TITLE CLUB** **G MART**
流瀉鯨 The Whale Tea **MATHNASIUM The Math Learning Center** **BOB'S STORES** **ups** **Edible ARRANGEMENTS**
DOLLAR TREE



CHARTER REALTY
Information contained in this document has been reviewed and approved by Charter Realty; however, errors sometimes occur. Charter disclaims any warranty of any kind, expressed or implied, as to any matter whatsoever relating to this service. In no event shall Charter be liable for any indirect, special, incidental or consequential damages arising out of any use of or reliance on any content or materials contained herein.