

SHOP RITE PLAZA

250 BARNUM AVENUE CUTOFF | STRATFORD, CT 06614

100% LEASED

ANCHORED BY



Walmart



PROPERTY INFORMATION

- GLA 320,000 sf
- Great exposure to I-95
- Traffic: 37,000 vehicles per day

AVAILABLE SPACE

- 100% Leased

AREA DEMOGRAPHICS

2023 DEMOGRAPHICS	1 MILE	3 MILE	5 MILE
POPULATION	11,003	89,913	215,283
MEDIAN HH INC	\$100,713	\$88,192	\$84,737
AVERAGE HH INC	\$112,924	\$108,693	\$104,217



CHARTER
REALTY & DEVELOPMENT

www.CharterRealty.com

FOR MORE INFORMATION CONTACT:

DAN ZELSON | 203.227.2922 | Dan@CharterRealty.com

SHOP RITE PLAZA

250 BARNUM AVENUE CUTOFF | STRATFORD, CT 06614

TENANTS / AVAILABILITY

#	TENANT	Sq. Ft.
01	Webster Bank	3,200
02	Home Depot	115,000
03	Shop Rite	64,000
04	Walmart	120,000



CHARTER REALTY

Information contained in this document has been reviewed and approved by Charter Realty; however, errors sometimes occur. Charter disclaims any warranty of any kind, expressed or implied, as to any matter whatsoever relating to this service. In no event shall Charter be liable for any indirect, special, incidental or consequential damages arising out of any use of or reliance on any content or materials contained herein.

SHOP RITE PLAZA

250 BARNUM AVENUE CUTOFF | STRATFORD, CT 06614

TRADE AREA DEMOGRAPHICS

1 MILE RADIUS:



Total Population: **11,003**

Households: **4,449**

Daytime Population: **11,221**

Median Age: **40.4**



Average Household Income: **\$112,924**

Median Household Income: **\$100,713**

3 MILE RADIUS:



Total Population: **89,913**

Households: **35,903**

Daytime Population: **66,842**

Median Age: **40.0**



Average Household Income: **\$108,693**

Median Household Income: **\$88,192**

5 MILE RADIUS:



Total Population: **215,283**

Households: **82,133**

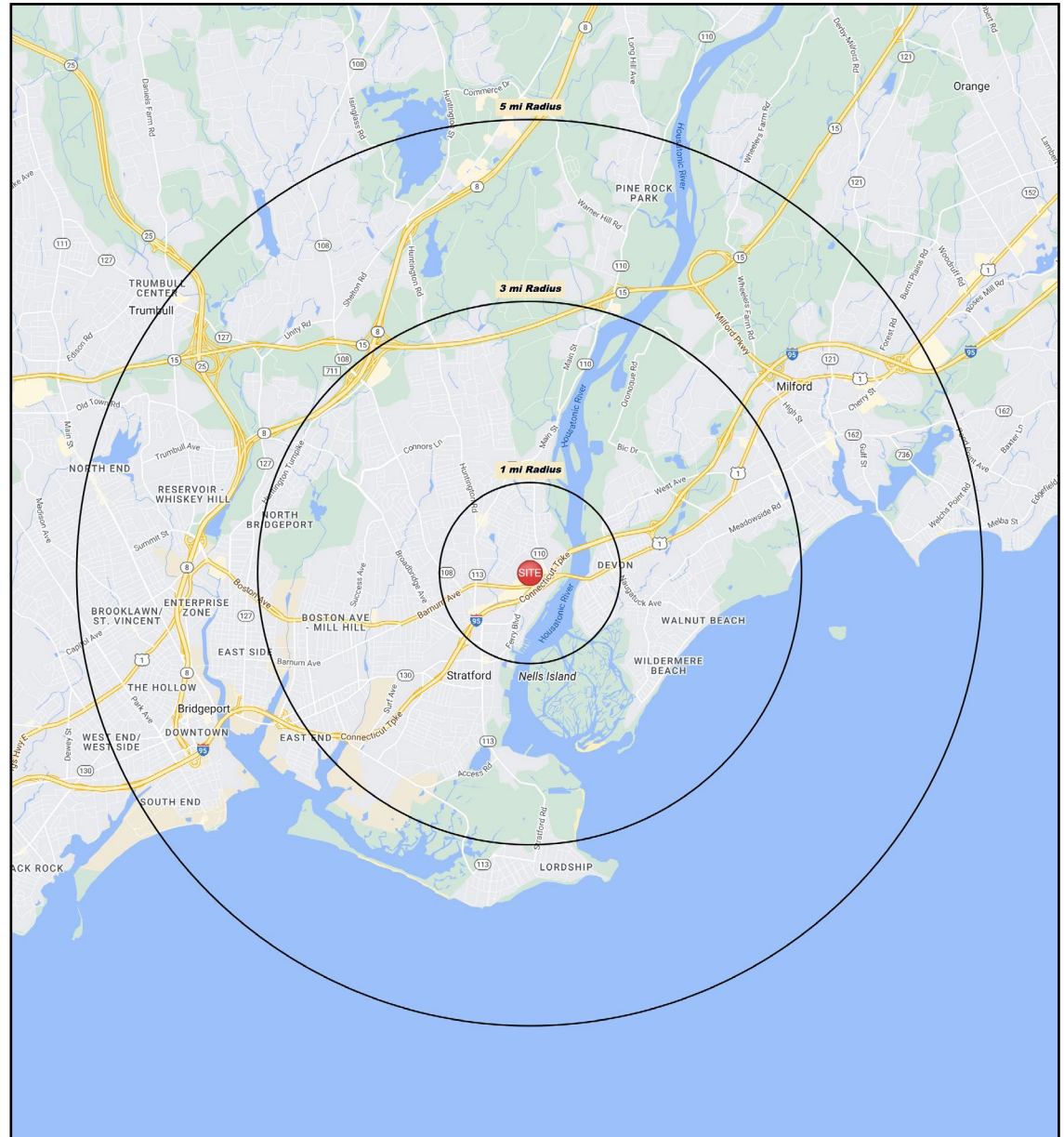
Daytime Population: **162,663**

Median Age: **38.1**



Average Household Income: **\$104,217**

Median Household Income: **\$84,737**



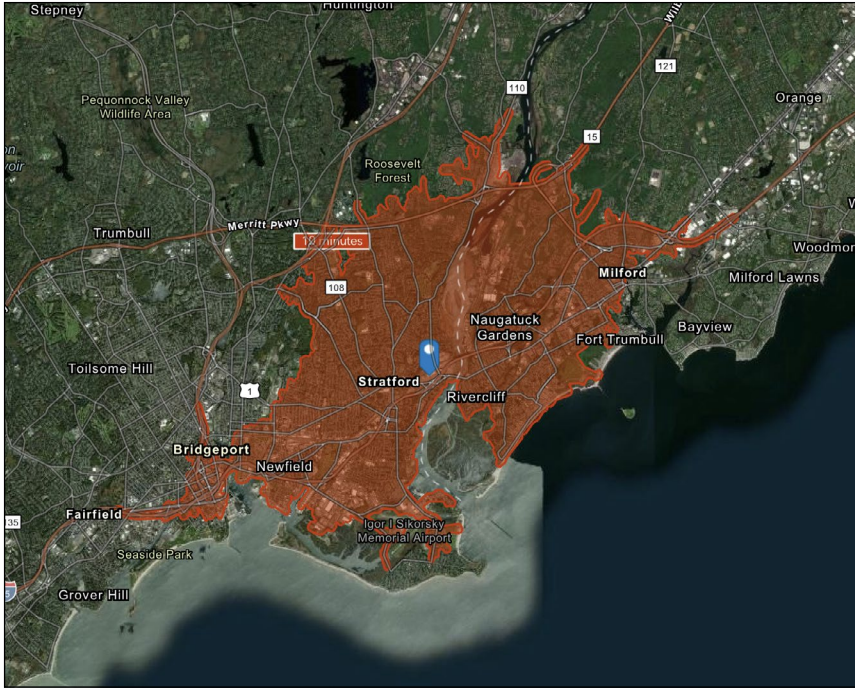
CHARTER REALTY

Information contained in this document has been reviewed and approved by Charter Realty; however, errors sometimes occur. Charter disclaims any warranty of any kind, expressed or implied, as to any matter whatsoever relating to this service. In no event shall Charter be liable for any indirect, special, incidental or consequential damages arising out of any use of or reliance on any content or materials contained herein.

SHOP RITE PLAZA

250 BARNUM AVENUE CUTOFF | STRATFORD, CT 06614

10 MINUTE DRIVE TIME



KEY FACTS

98,778

Population

\$72,436

Median Household Income

40.7

Median Age

100,525

Daytime Population

TAPESTRY SEGMENTS

Pleasantville 7,430 Households	Parks & Rec 6,085 Households	Fresh Ambitions 4,943 Households
Socioeconomic Traits 66% college educated. Higher labor force participation rate. Many professionals in finance, information/ technology, education, or management.	Socioeconomic Traits More than half of the population is college educated. This is a financially shrewd market with a diverse workforce.	Socioeconomic Traits Nearly one in four is foreign-born. Supporting large families, many earners will take on overtime work when possible.
Household Types Older married-couple families, more w/o children under 18, but many w/ children over 18. years	Household Types Married couples, approaching retirement age.	Household Types More single-parent than married-couple families.
Typical Housing Single Family	Typical Housing Single Family	Typical Housing Multi-unit, Single Family

TOTAL RETAIL SALES

Includes F&B



\$879,248,271

EDUCATION

Bachelor's Degree or Higher



33%

OWNER OCCUPIED HOME VALUE

Average



\$326,462

ANNUAL HOUSEHOLD SPENDING

\$3,502

Eating Out

\$2,167

Apparel & Services

\$6,603

Groceries

\$249

Computer & Hardware

\$6,521

Health Care



CHARTER REALTY

Information contained in this document has been reviewed and approved by Charter Realty; however, errors sometimes occur. Charter disclaims any warranty of any kind, expressed or implied, as to any matter whatsoever relating to this service. In no event shall Charter be liable for any indirect, special, incidental or consequential damages arising out of any use of or reliance on any content or materials contained herein.

SHOP RITE PLAZA

250 BARNUM AVENUE CUTOFF | STRATFORD, CT 06614



CHARTER REALTY

Information contained in this document has been reviewed and approved by Charter Realty; however, errors sometimes occur. Charter disclaims any warranty of any kind, expressed or implied, as to any matter whatsoever relating to this service. In no event shall Charter be liable for any indirect, special, incidental or consequential damages arising out of any use of or reliance on any content or materials contained herein.

SHOP RITE PLAZA

250 BARNUM AVENUE CUTOFF | STRATFORD, CT 06614

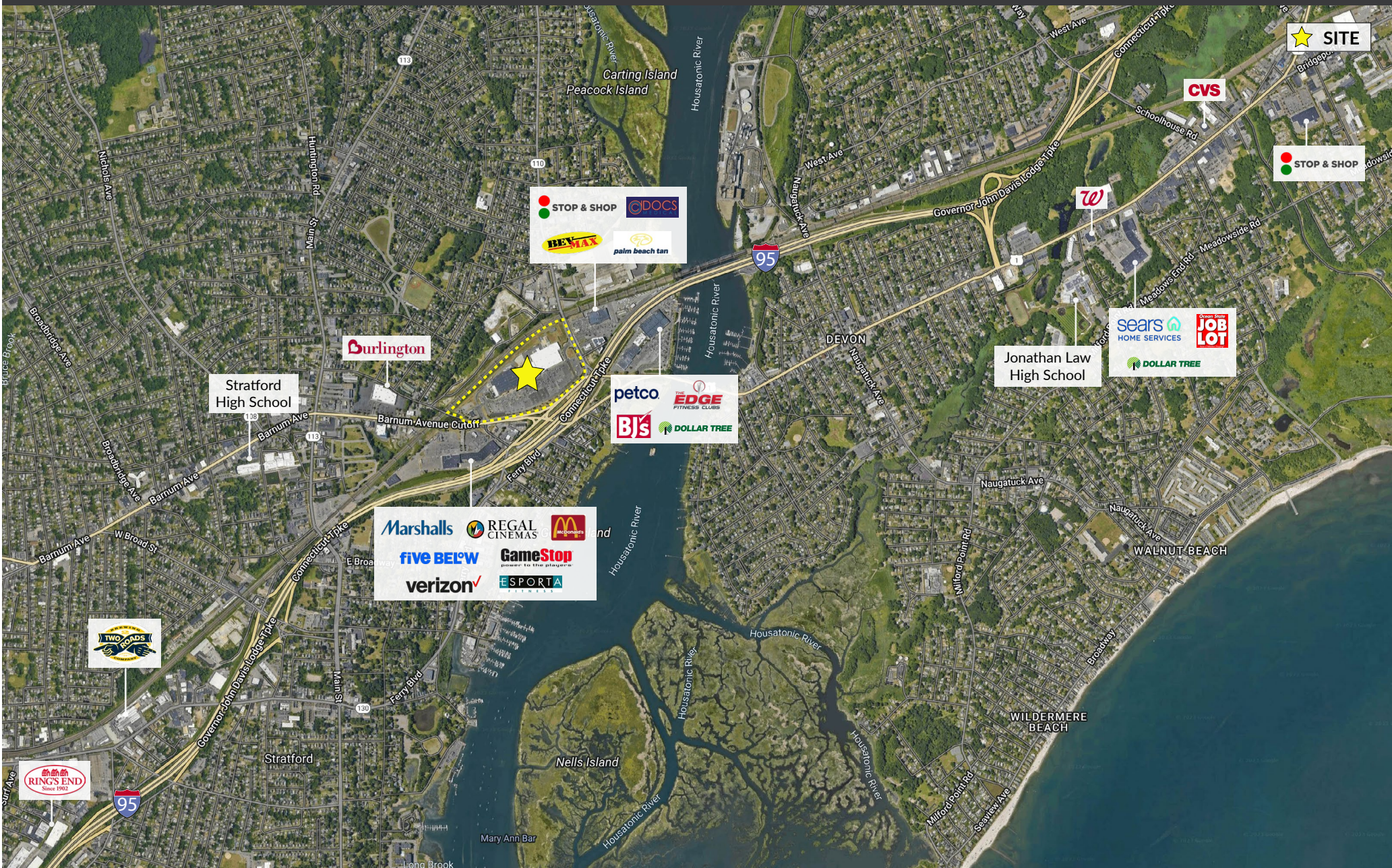


CHARTER REALTY

Information contained in this document has been reviewed and approved by Charter Realty; however, errors sometimes occur. Charter disclaims any warranty of any kind, expressed or implied, as to any matter whatsoever relating to this service. In no event shall Charter be liable for any indirect, special, incidental or consequential damages arising out of any use of or reliance on any content or materials contained herein.

SHOP RITE PLAZA

250 BARNUM AVENUE CUTOFF | STRATFORD, CT 06614



CHARTER REALTY

Information contained in this document has been reviewed and approved by Charter Realty; however, errors sometimes occur. Charter disclaims any warranty of any kind, expressed or implied, as to any matter whatsoever relating to this service. In no event shall Charter be liable for any indirect, special, incidental or consequential damages arising out of any use of or reliance on any content or materials contained herein.

SHOP RITE PLAZA

250 BARNUM AVENUE CUTOFF | STRATFORD, CT 06614



CHARTER REALTY

Information contained in this document has been reviewed and approved by Charter Realty; however, errors sometimes occur. Charter disclaims any warranty of any kind, expressed or implied, as to any matter whatsoever relating to this service. In no event shall Charter be liable for any indirect, special, incidental or consequential damages arising out of any use of or reliance on any content or materials contained herein.