

CONSTRUCTION HAS STARTED

THE SHOPS AT STONEBRIDGE

JOIN WHOLE FOODS, TJ MAXX, BIRDCODE, CHIPOTLE



CHESHIRE, CT

TOWN OF CHESHIRE, NEW HAVEN COUNTY, CONNECTICUT

107 ACRE MIXED USE PROJECT



THE SHOPS AT STONEBRIDGE

UNDER CONSTRUCTION

PROPERTY INFORMATION

New Development on 107 Acres.

....

Easy access on / off of I-84 & I-691, with ideal location right off Exit 3 of I-691.

....

Two signaled entrances to the center.

....

Retail Pads Available, Adult Housing Opportunity / Office Opportunity & Hotel coming soon.

....

Retail Shopping Center of 136,000sf.

....

Traffic Count: I-691: 49,499 vpd; Highland Ave: 12,894 vpd.

AVAILABLE SPACE

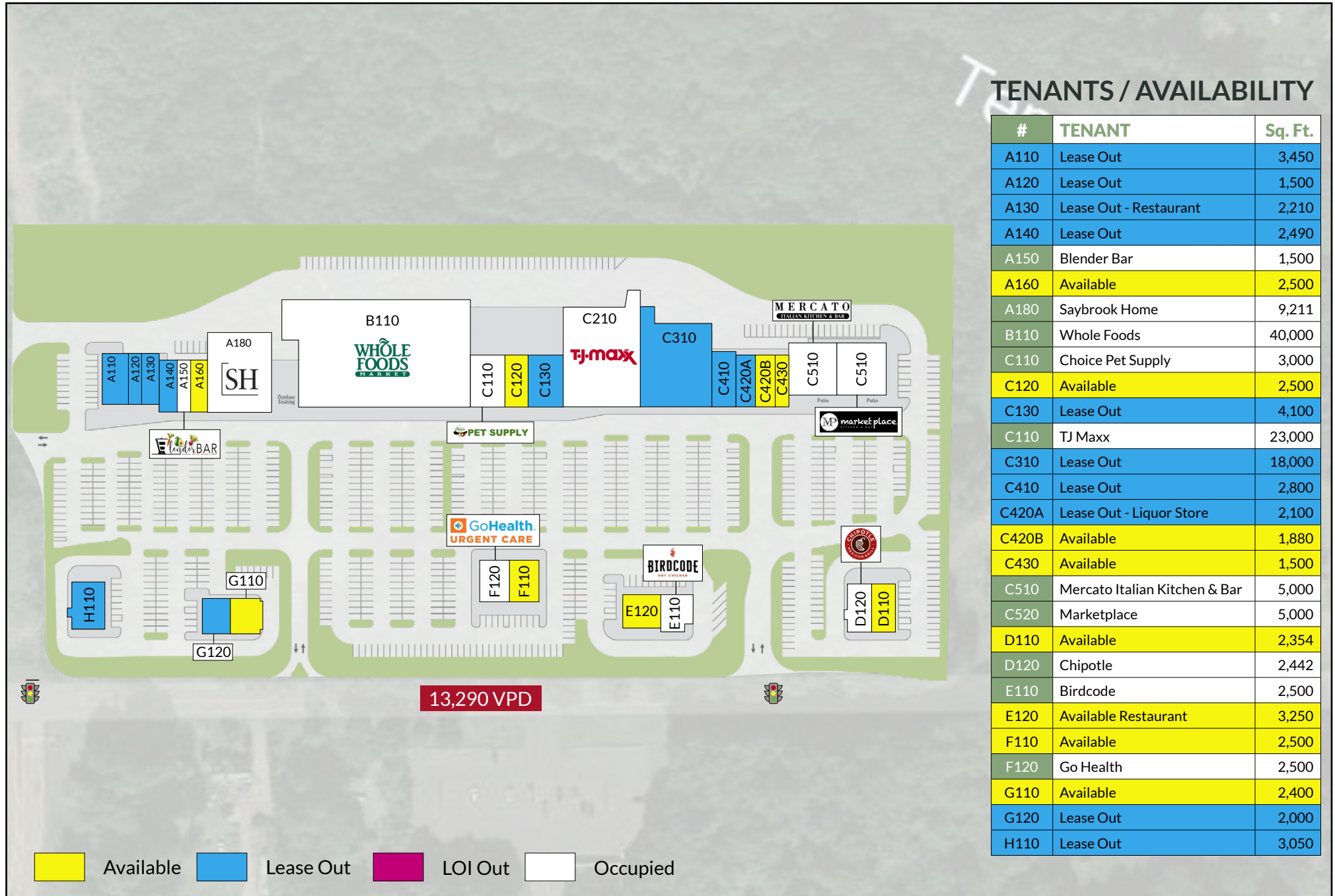
Available: 1,500sf - 18,000sf.



OVERALL SITE PLAN



PROPERTY LEASING PLAN - RETAIL



TENANTS / AVAILABILITY

#	TENANT	Sq. Ft.
A110	Lease Out	3,450
A120	Lease Out	1,500
A130	Lease Out - Restaurant	2,210
A140	Lease Out	2,490
A150	Blender Bar	1,500
A160	Available	2,500
A180	Saybrook Home	9,211
B110	Whole Foods	40,000
C110	Choice Pet Supply	3,000
C120	Available	2,500
C130	Lease Out	4,100
C110	TJ Maxx	23,000
C310	Lease Out	18,000
C410	Lease Out	2,800
C420A	Lease Out - Liquor Store	2,100
C420B	Available	1,880
C430	Available	1,500
C510	Mercato Italian Kitchen & Bar	5,000
C520	Marketplace	5,000
D110	Available	2,354
D120	Chipotle	2,442
E110	Birdcode	2,500
E120	Available Restaurant	3,250
F110	Available	2,500
F120	Go Health	2,500
G110	Available	2,400
G120	Lease Out	2,000
H110	Lease Out	3,050

TRADE AREA DEMOGRAPHICS

1 MILE RADIUS:



Total Population: **2,196**
 Households: **737**
 Daytime Population: **3,526**
 Median Age: **46.1**



Average Household Income: **\$137,501**
 Median Household Income: **\$106,307**

3 MILE RADIUS:



Total Population: **31,708**
 Households: **11,696**
 Daytime Population: **29,478**
 Median Age: **42.2**



Average Household Income: **\$164,752**
 Median Household Income: **\$126,954**

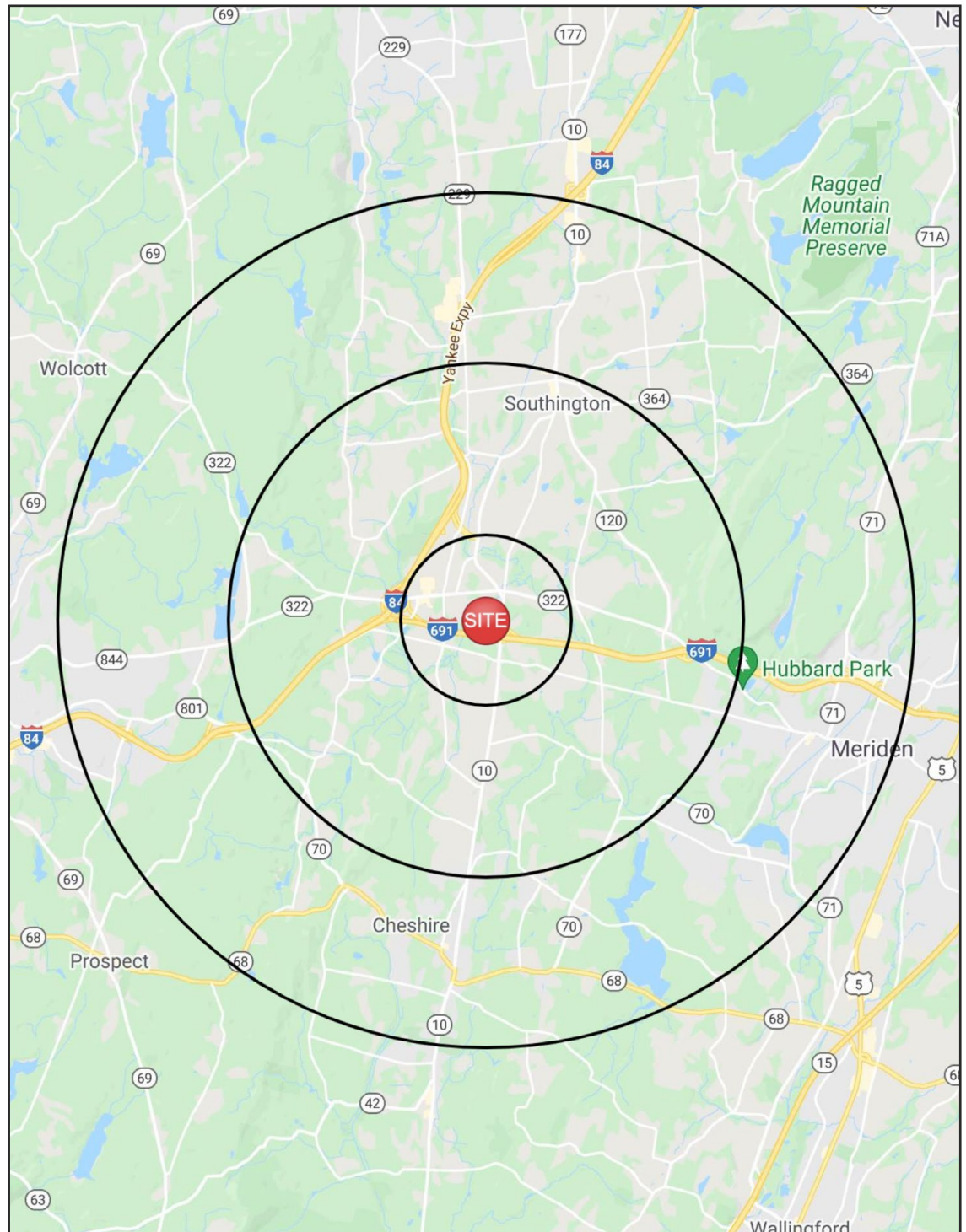
5 MILE RADIUS:



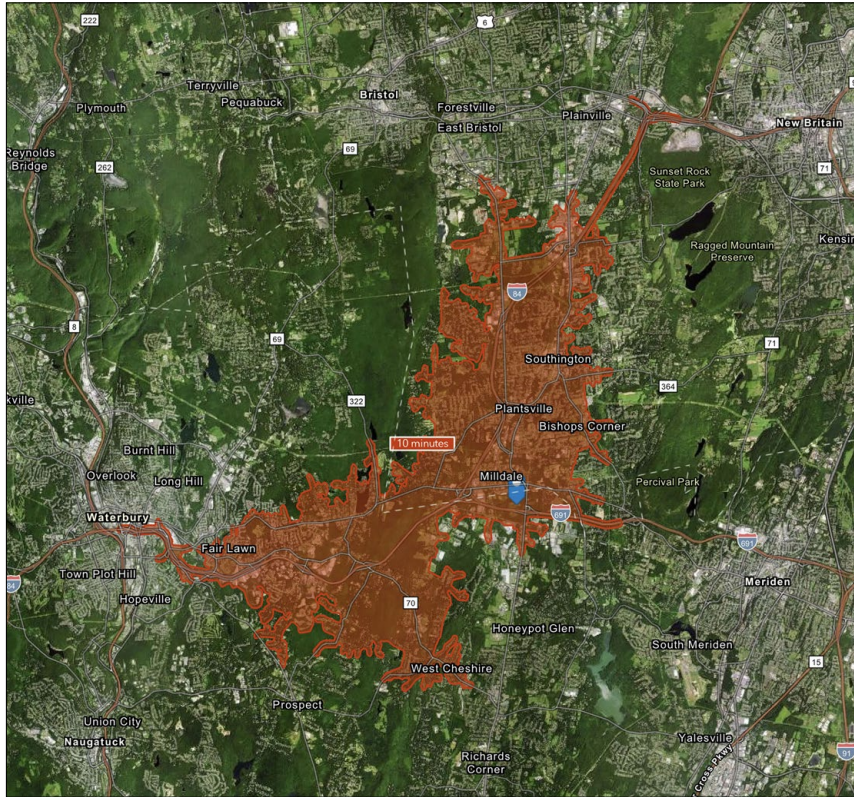
Total Population: **102,005**
 Households: **39,661**
 Daytime Population: **72,216**
 Median Age: **41.4**



Average Household Income: **\$139,816**
 Median Household Income: **\$107,961**



10 MINUTE DRIVE TIME



KEY FACTS

46,869

Population

42.8

Median Age

\$87,290

Median Household Income

43,163

Daytime Population

TAPESTRY SEGMENTS

Parks & Rec 5,112 Households	Front Porches 4,629 Households	Savvy Suburbanites 3,141 Households
<p>Socioeconomic Traits</p> <p>More than half of the population is college educated. This is a financially shrewd market with a diverse workforce.</p>	<p>Socioeconomic Traits</p> <p>Composed of a blue-collar workforce with a strong labor force participation rate.</p>	<p>Socioeconomic Traits</p> <p>Residents are well educated, well read, and well capitalized. Families include empty nesters. Higher labor force participation rate at 67.9%.</p>
<p>Household Types</p> <p>Married couples, approaching retirement age.</p>	<p>Household Types</p> <p>Young families w/ children, single parent families, singles living alone.</p>	<p>Household Types</p> <p>Married couples with no children or older children; average household size is 2.85.</p>
<p>Typical Housing</p> <p>Single Family</p>	<p>Typical Housing</p> <p>Single Family; Multi Units</p>	<p>Typical Housing</p> <p>Single Family</p>

TOTAL RETAIL SALES

Includes F&B



\$481,874,662

EDUCATION

Bachelor's Degree or Higher



37%

OWNER OCCUPIED HOME VALUE

Average



\$340,880

ANNUAL HOUSEHOLD SPENDING

\$3,938

Eating Out

\$2,364

Apparel & Services

\$7,307

Groceries

\$279

Computer & Hardware

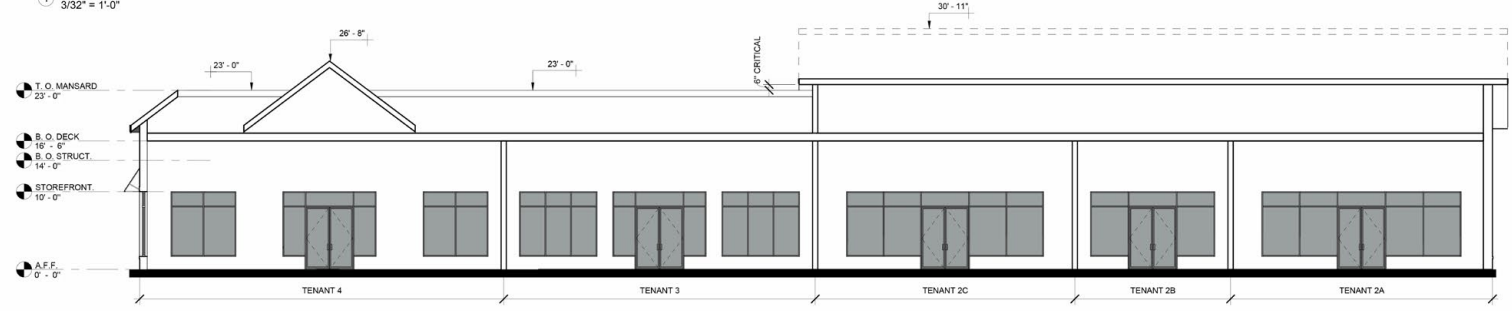
\$7,714

Health Care

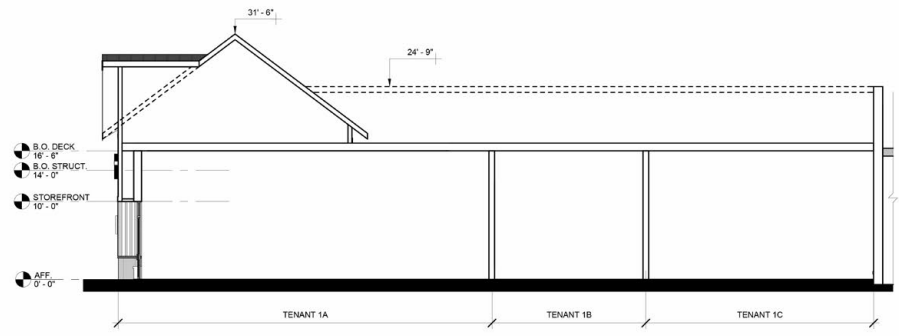
ELEVATIONS



① ELEVATION BUILDING A
3/32" = 1'-0"



② SCHEMATIC BUILDING A SECTION
1/8" = 1'-0"



③ SCHEMATIC BUILDING A SECTION
1/8" = 1'-0"

ELEVATIONS



② ELEVATION BUILDING B
3/32" = 1'-0"

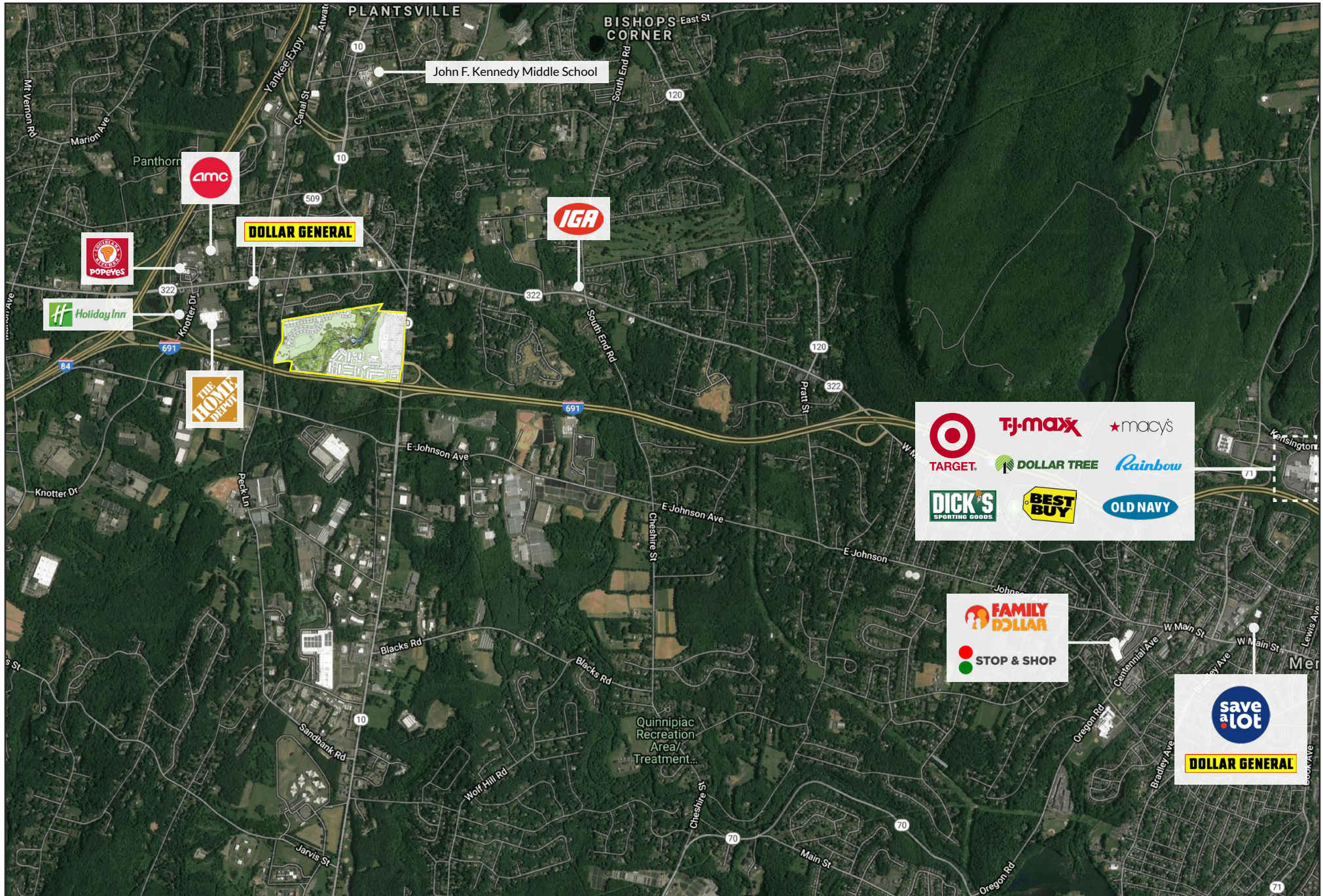
ELEVATIONS



AERIAL PLAN



MARKET OVERVIEW



RENDERINGS



THE SHOPS AT STONEBRIDGE



CHARTER REALTY

Dan Zelson | (203) 227-2922 | Dan@CharterRealty.com

www.CharterRealty.com

The Shops At Stonebridge | Route 10 & I-691, Cheshire, CT 06410

CHARTER REALTY

Information contained in this document has been reviewed and approved by Charter Realty; however, errors sometimes occur. Charter disclaims any warranty of any kind, expressed or implied, as to any matter whatsoever relating to this service. In no event shall Charter be liable for any indirect, special, incidental or consequential damages arising out of any use of or reliance on any content or materials contained herein.