

# MILFORD SQUARE

1611 BOSTON POST RD | MILFORD, CT 06460

AVAILABLE 3,200 SF

## CO-TENANTS



## PROPERTY INFORMATION

- Newly developed retail with abundant parking both in the front and rear of the center
- Milford Square sits between two traffic light intersections, and across from a Whole Foods anchored shopping center
- Multiple access / egress points
- Traffic: 31,004 vehicles per day

## AVAILABLE SPACE

- 3,200 sf
- Available immediately
- All uses considered

## AREA DEMOGRAPHICS

2024 DEMOGRAPHICS	1 MILE	3 MILE	5 MILE
POPULATION	3,809	50,790	127,411
MEDIAN HH INC	\$114,900	\$115,414	\$100,107
AVERAGE HH INC	\$146,553	\$154,988	\$132,104



www.CharterRealty.com

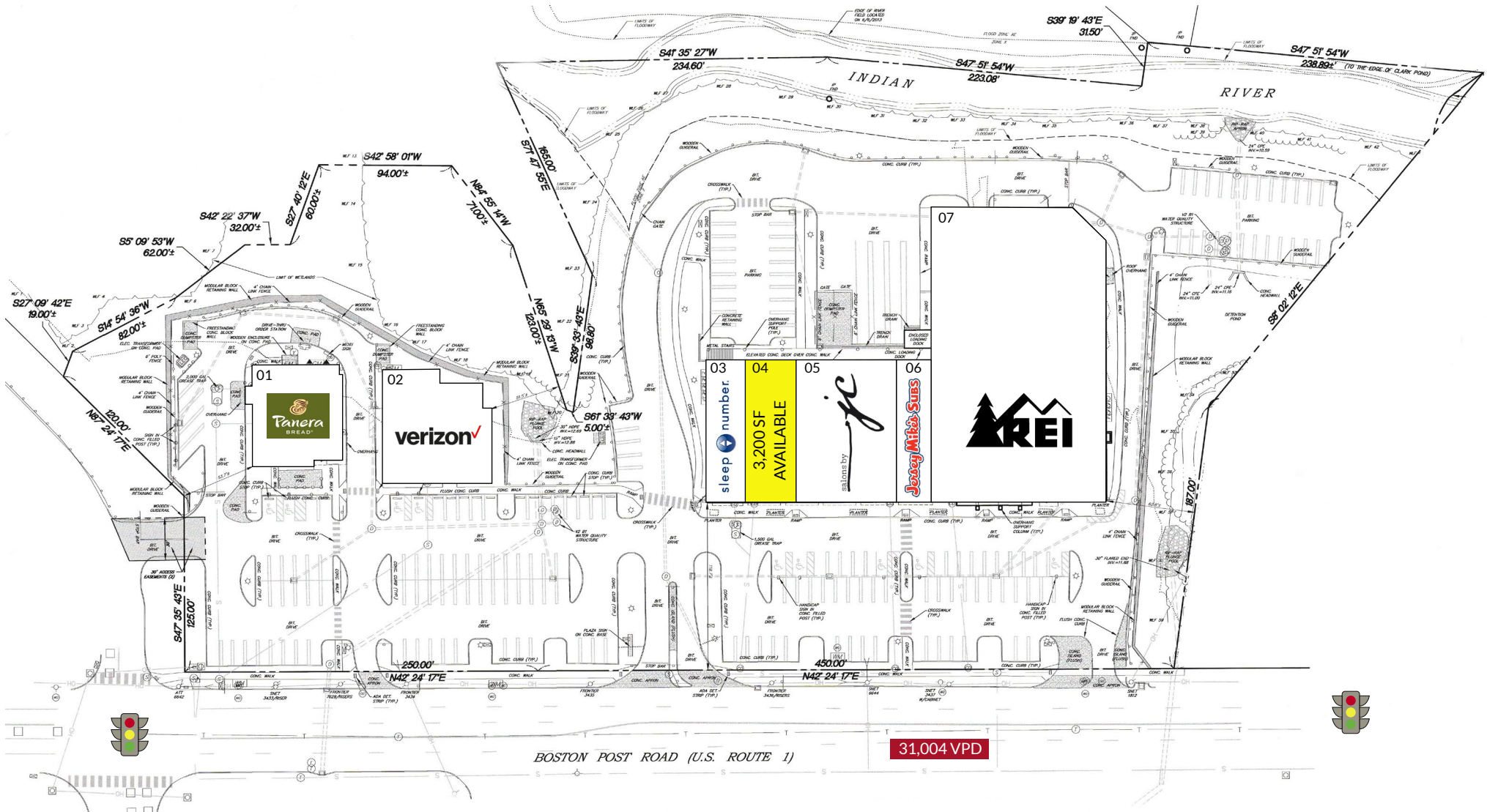
FOR MORE INFORMATION CONTACT:

PETER H. LEVINE | 203.683.1567 | [Peter@CharterRealty.com](mailto:Peter@CharterRealty.com)



# MILFORD SQUARE

1611 BOSTON POST RD | MILFORD, CT 06460

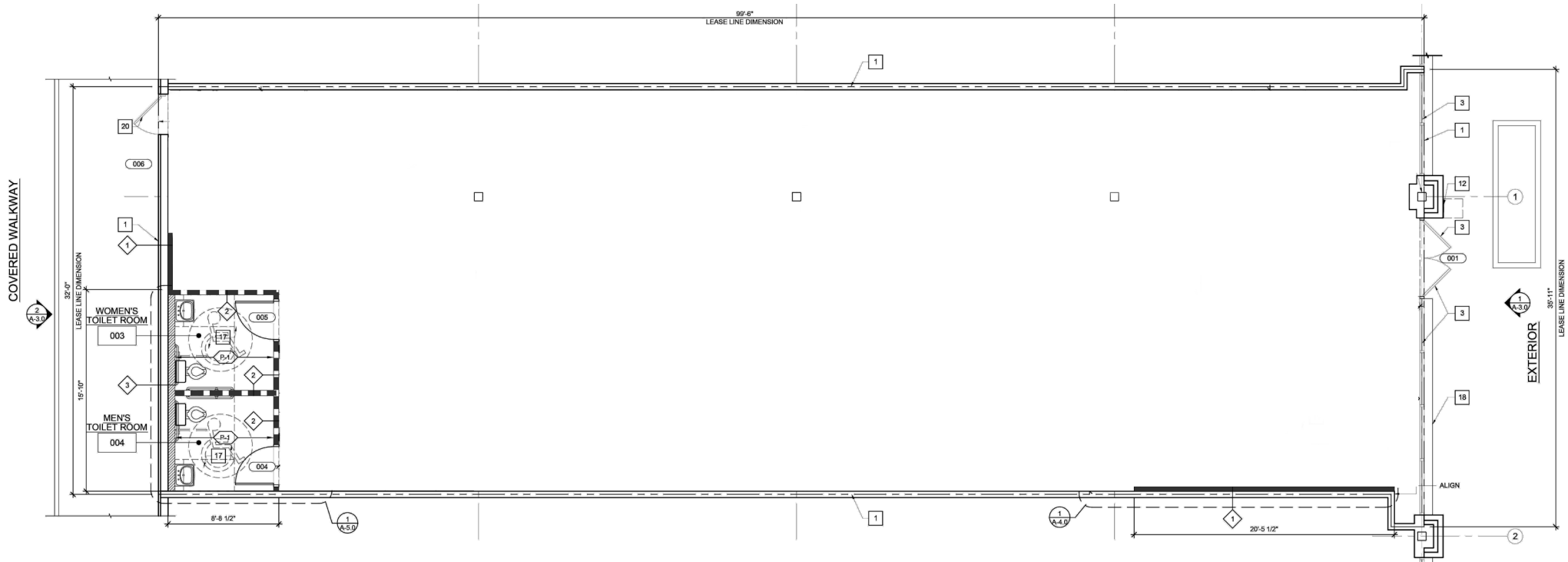


**CHARTER REALTY**  
 Information contained in this document has been reviewed and approved by Charter Realty; however, errors sometimes occur. Charter disclaims any warranty of any kind, expressed or implied, as to any matter whatsoever relating to this service. In no event shall Charter be liable for any indirect, special, incidental or consequential damages arising out of any use of or reliance on any content or materials contained herein.

# MILFORD SQUARE

1611 BOSTON POST RD | MILFORD, CT 06460

FLOOR PLAN



## CHARTER REALTY

Information contained in this document has been reviewed and approved by Charter Realty; however, errors sometimes occur. Charter disclaims any warranty of any kind, expressed or implied, as to any matter whatsoever relating to this service. In no event shall Charter be liable for any indirect, special, incidental or consequential damages arising out of any use of or reliance on any content or materials contained herein.



# MILFORD SQUARE

1611 BOSTON POST RD | MILFORD, CT 06460

## TRADE AREA DEMOGRAPHICS

### 1 MILE RADIUS:



Total Population: **3,809**

Households: **1,735**

Daytime Population: **7,878**

Median Age: **46.8**



Average Household Income: **\$146,553**

Median Household Income : **\$114,900**

### 3 MILE RADIUS:



Total Population: **50,790**

Households: **21,085**

Daytime Population: **51,009**

Median Age: **46.6**



Average Household Income: **\$154,988**

Median Household Income : **\$115,414**

### 5 MILE RADIUS:



Total Population: **127,411**

Households: **51,645**

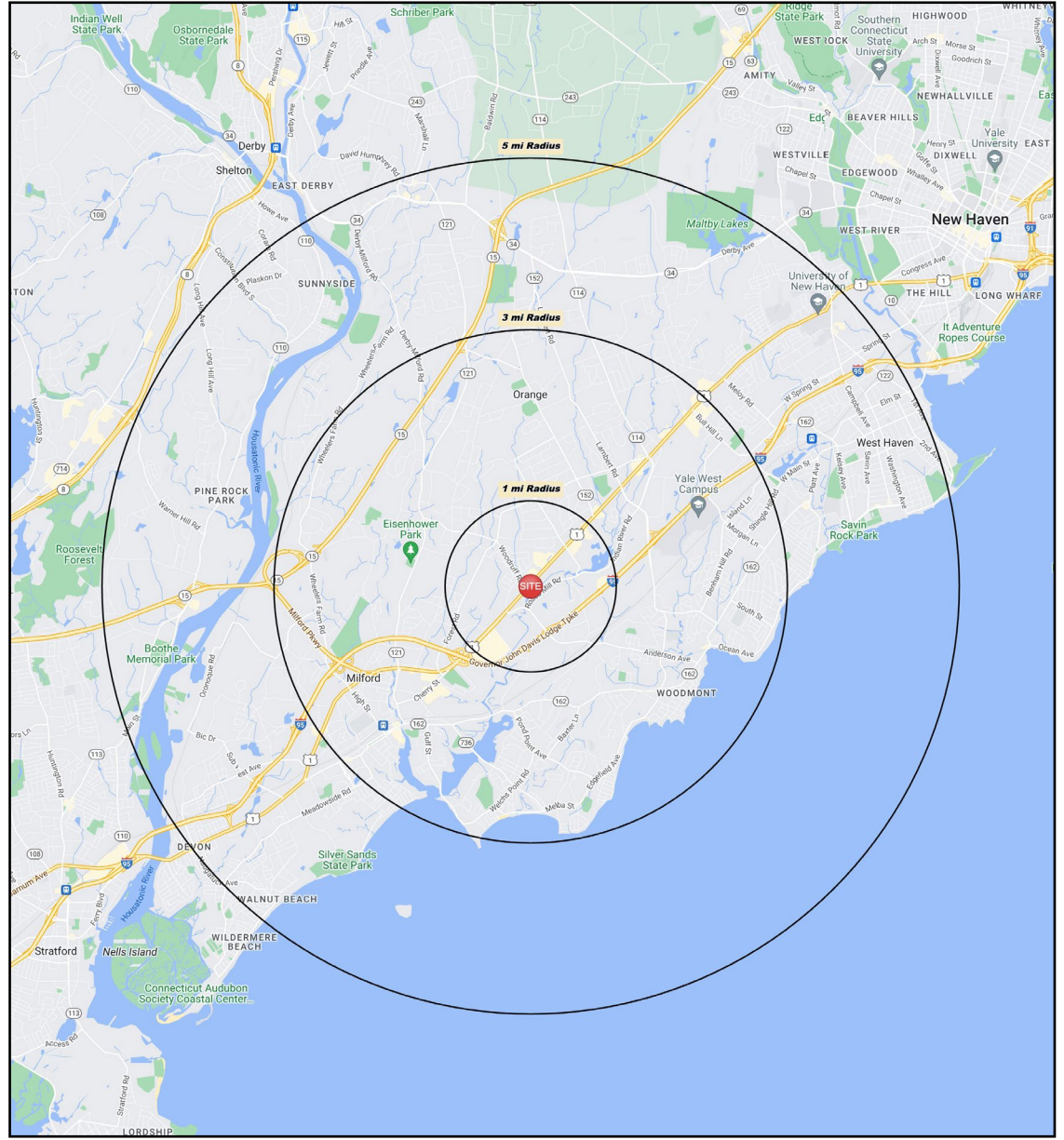
Daytime Population: **103,212**

Median Age: **43.1**



Average Household Income: **\$132,104**

Median Household Income : **\$100,107**



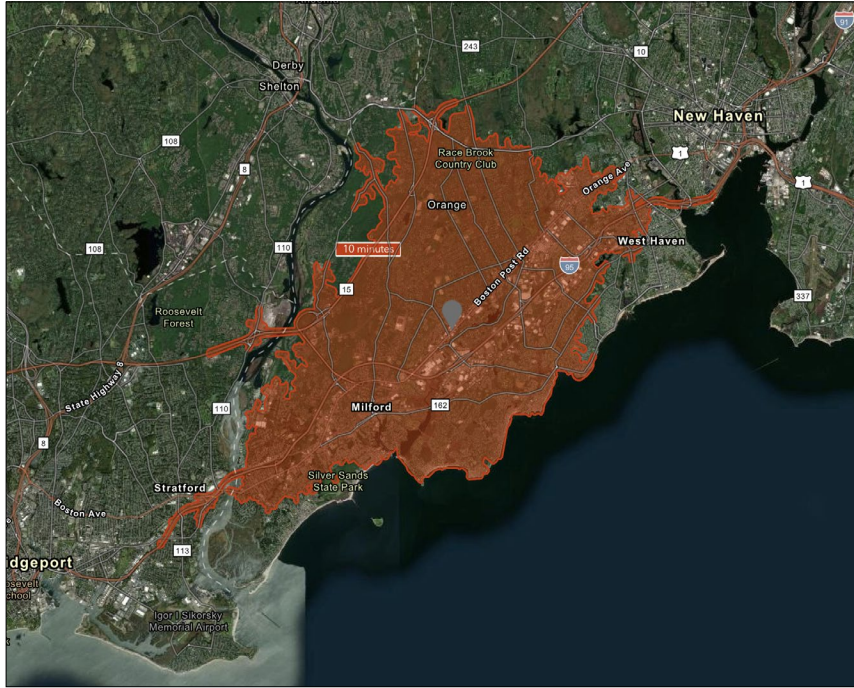
#### CHARTER REALTY

Information contained in this document has been reviewed and approved by Charter Realty; however, errors sometimes occur. Charter disclaims any warranty of any kind, expressed or implied, as to any matter whatsoever relating to this service. In no event shall Charter be liable for any indirect, special, incidental or consequential damages arising out of any use of or reliance on any content or materials contained herein.

# MILFORD SQUARE

1611 BOSTON POST RD | MILFORD, CT 06460

10 MINUTE DRIVE TIME



## KEY FACTS

72,876

Population

\$98,665

Median Household Income

45.0

Median Age

81,946

Daytime Population

## TAPESTRY SEGMENTS

### Pleasantville

5,300 households

#### Socioeconomic Traits

66% college educated. Higher labor force participation rate. Many professionals in finance, information/ technology, education, or management.

#### Household Types

Older married-couple families, more w/o children under 18, but many w/ children over 18. years

#### Typical Housing

Single Family

### Parks & Rec

4,091 households

#### Socioeconomic Traits

More than half of the population is college educated. This is a financially shrewd market with a diverse workforce.

#### Household Types

Married couples, approaching retirement age.

#### Typical Housing

Single Family

### Savvy Suburbanites

3,747 households

#### Socioeconomic Traits

Residents are well educated, well read, and well capitalized. Families include empty nesters. Higher labor force participation rate at 67.9%.

#### Household Types

Married couples with no children or older children; average household size is 2.85.

#### Typical Housing

Single Family

## TOTAL RETAIL SALES

Includes F&B



\$845,952,043

## EDUCATION

Bachelor's Degree or Higher



46%

## OWNER OCCUPIED HOME VALUE

Average



\$408,283

## ANNUAL HOUSEHOLD SPENDING

\$4,387

Eating Out

\$2,639

Apparel & Services

\$8,108

Groceries

\$309

Computer & Hardware

\$8,623

Health Care



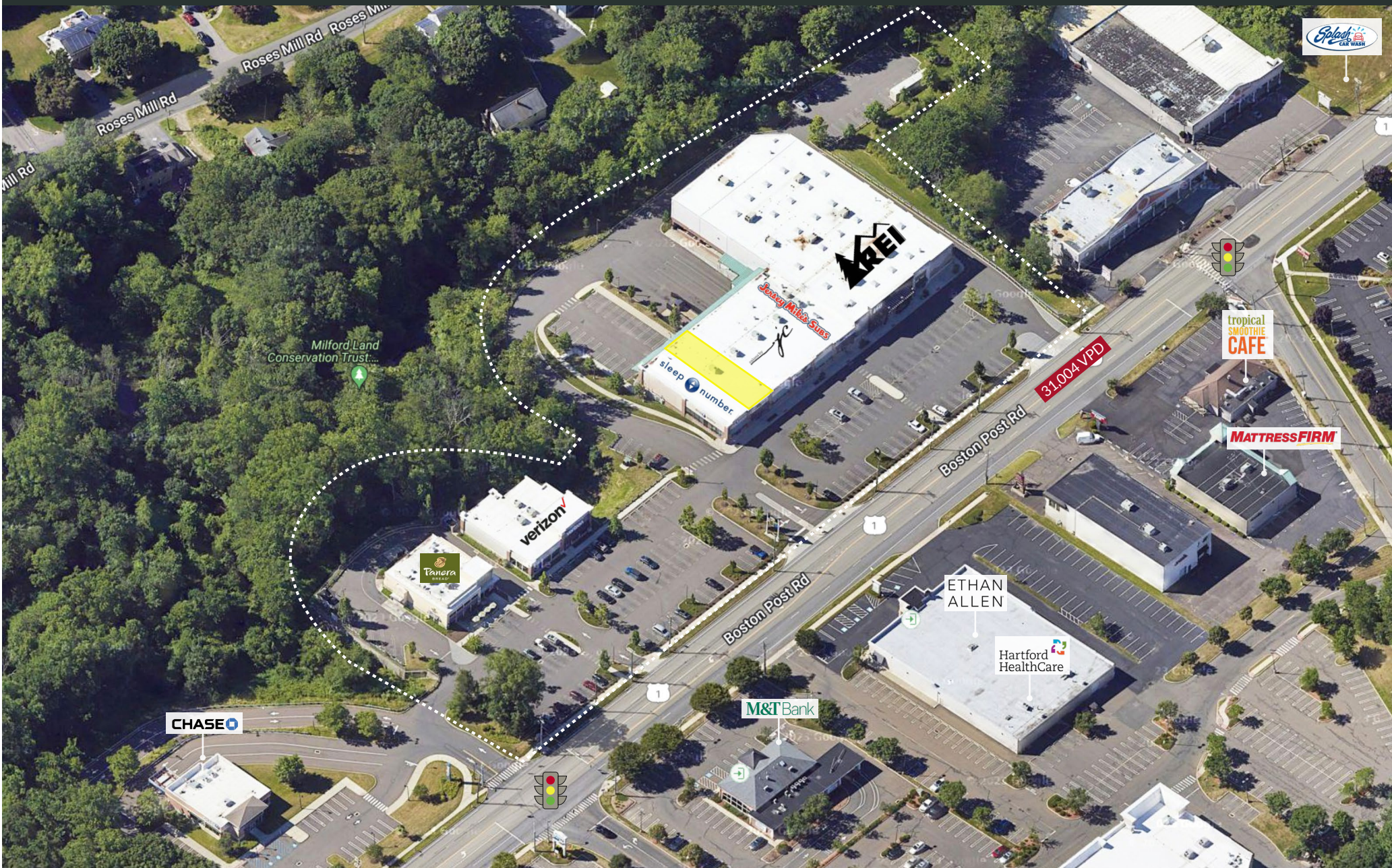
### CHARTER REALTY

Information contained in this document has been reviewed and approved by Charter Realty; however, errors sometimes occur. Charter disclaims any warranty of any kind, expressed or implied, as to any matter whatsoever relating to this service. In no event shall Charter be liable for any indirect, special, incidental or consequential damages arising out of any use of or reliance on any content or materials contained herein.



# MILFORD SQUARE

1611 BOSTON POST RD | MILFORD, CT 06460



## CHARTER REALTY

Information contained in this document has been reviewed and approved by Charter Realty; however, errors sometimes occur. Charter disclaims any warranty of any kind, expressed or implied, as to any matter whatsoever relating to this service. In no event shall Charter be liable for any indirect, special, incidental or consequential damages arising out of any use of or reliance on any content or materials contained herein.



# MILFORD SQUARE

1611 BOSTON POST RD | MILFORD, CT 06460



**CHARTER REALTY**  
Information contained in this document has been reviewed and approved by Charter Realty; however, errors sometimes occur. Charter disclaims any warranty of any kind, expressed or implied, as to any matter whatsoever relating to this service. In no event shall Charter be liable for any indirect, special, incidental or consequential damages arising out of any use of or reliance on any content or materials contained herein.



# MILFORD SQUARE

1611 BOSTON POST RD | MILFORD, CT 06460

★ SITE



**CHARTER REALTY**  
Information contained in this document has been reviewed and approved by Charter Realty; however, errors sometimes occur. Charter disclaims any warranty of any kind, expressed or implied, as to any matter whatsoever relating to this service. In no event shall Charter be liable for any indirect, special, incidental or consequential damages arising out of any use of or reliance on any content or materials contained herein.



# MILFORD SQUARE

1611 BOSTON POST RD | MILFORD, CT 06460



## CHARTER REALTY

Information contained in this document has been reviewed and approved by Charter Realty; however, errors sometimes occur. Charter disclaims any warranty of any kind, expressed or implied, as to any matter whatsoever relating to this service. In no event shall Charter be liable for any indirect, special, incidental or consequential damages arising out of any use of or reliance on any content or materials contained herein.