

# WOODRUFF PLAZA

1175 MAIN STREET | CLINTON, MA 01510

AVAILABLE 1,800 SF - 6,300 SF + PAD SITE - 7,400 SF

ANCHORED BY

*shaw's*

**FAMILY DOLLAR**

## PROPERTY INFORMATION

- GLA - 98,810 SF
- Suburban grocery anchored center with a mix of national and strong regional tenants
- Pad site available
- 10,465 vehicles per day on Main Street

## AVAILABLE SPACE

- Space 03A: 3,150 SF
- Space 03B: 3,150 SF
- Space 10: 1,800 SF
- PAD: up to 7,400 building

## AREA DEMOGRAPHICS

2024 DEMOGRAPHICS	1 MILE	3 MILE	5 MILE
POPULATION	7,754	23,606	35,150
MEDIAN HH INC	\$99,033	\$106,159	\$119,648
AVERAGE HH INC	\$114,755	\$132,779	\$152,295



www.CharterRealty.com

FOR MORE INFORMATION CONTACT:

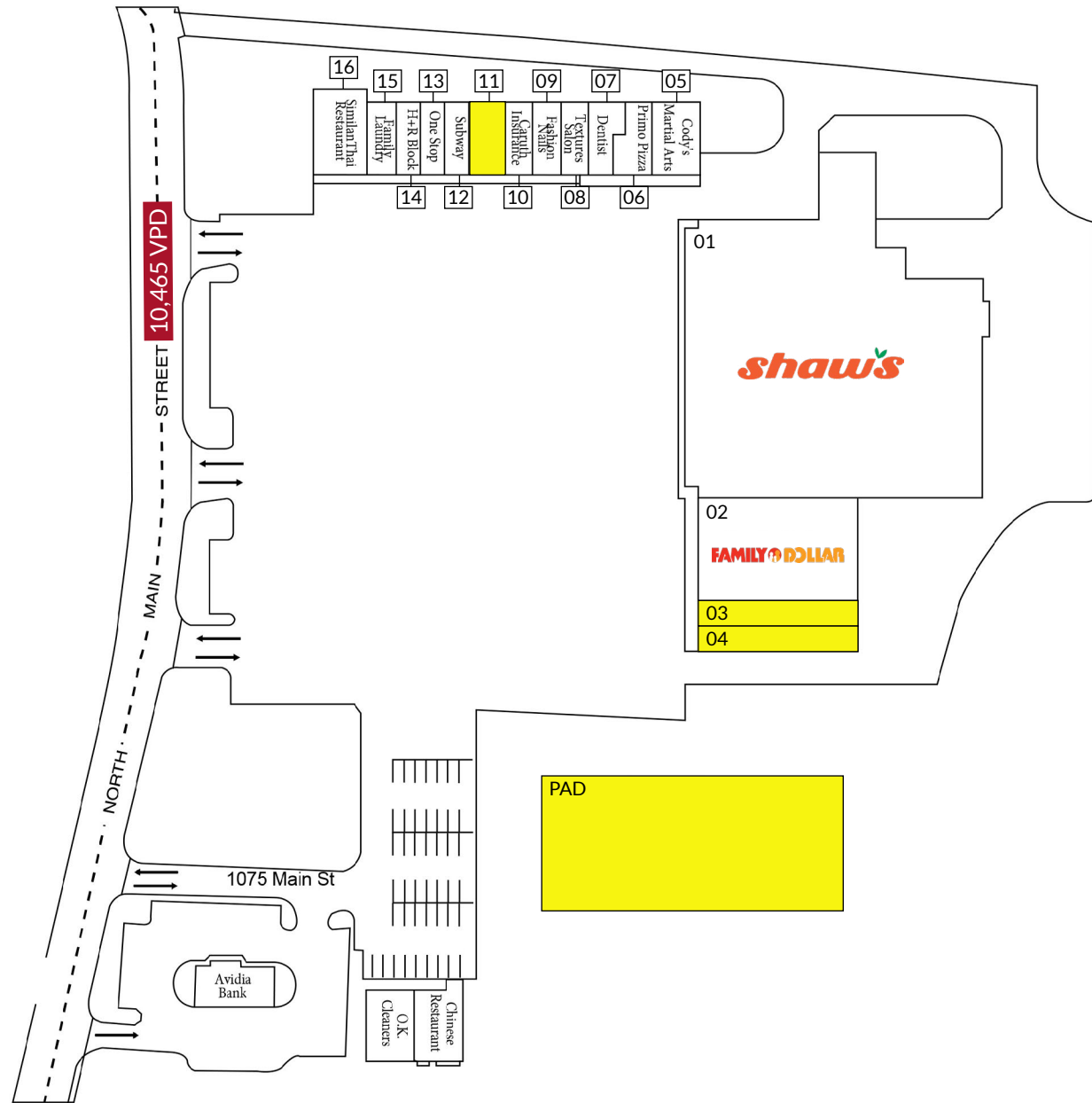
ANGELO B. PAPPAS | 617.431.1096 | [Angelo@CharterRealty.com](mailto:Angelo@CharterRealty.com)

# WOODRUFF PLAZA

1175 MAIN STREET | CLINTON, MA 01510

## TENANTS / AVAILABILITY

#	TENANT
01	Shaw's
02	Family Dollar
03	Available - 3,150 SF
04	Available - 3,150 SF
05	Cody's Martial Arts
06	Primo Pizza
07	Dentist
08	Textures Salon
09	Fashion Nails
10	Caruth Insurance
11	Available - 1,800 SF
12	Subway
13	One Stop
14	HR Block
15	Family Laundry
16	Similan Thai Restaurant
PAD	Available - Up to 7,400 SF



### CHARTER REALTY

Information contained in this document has been reviewed and approved by Charter Realty; however, errors sometimes occur. Charter disclaims any warranty of any kind, expressed or implied, as to any matter whatsoever relating to this service. In no event shall Charter be liable for any indirect, special, incidental or consequential damages arising out of any use of or reliance on any content or materials contained herein.

# WOODRUFF PLAZA

1175 MAIN STREET | CLINTON, MA 01510

## TRADE AREA DEMOGRAPHICS

### 1 MILE RADIUS:



Total Population: 7,754

Households: 3,258

Daytime Population: 4,015

Median Age: 41.1



Average Household Income: **\$114,755**

Median Household Income: **\$99,033**

### 3 MILE RADIUS:



Total Population: 23,606

Households: 9,624

Daytime Population: 16,070

Median Age: 41.3



Average Household Income: **\$132,779**

Median Household Income: **\$106,159**

### 5 MILE RADIUS:



Total Population: 35,150

Households: 13,955

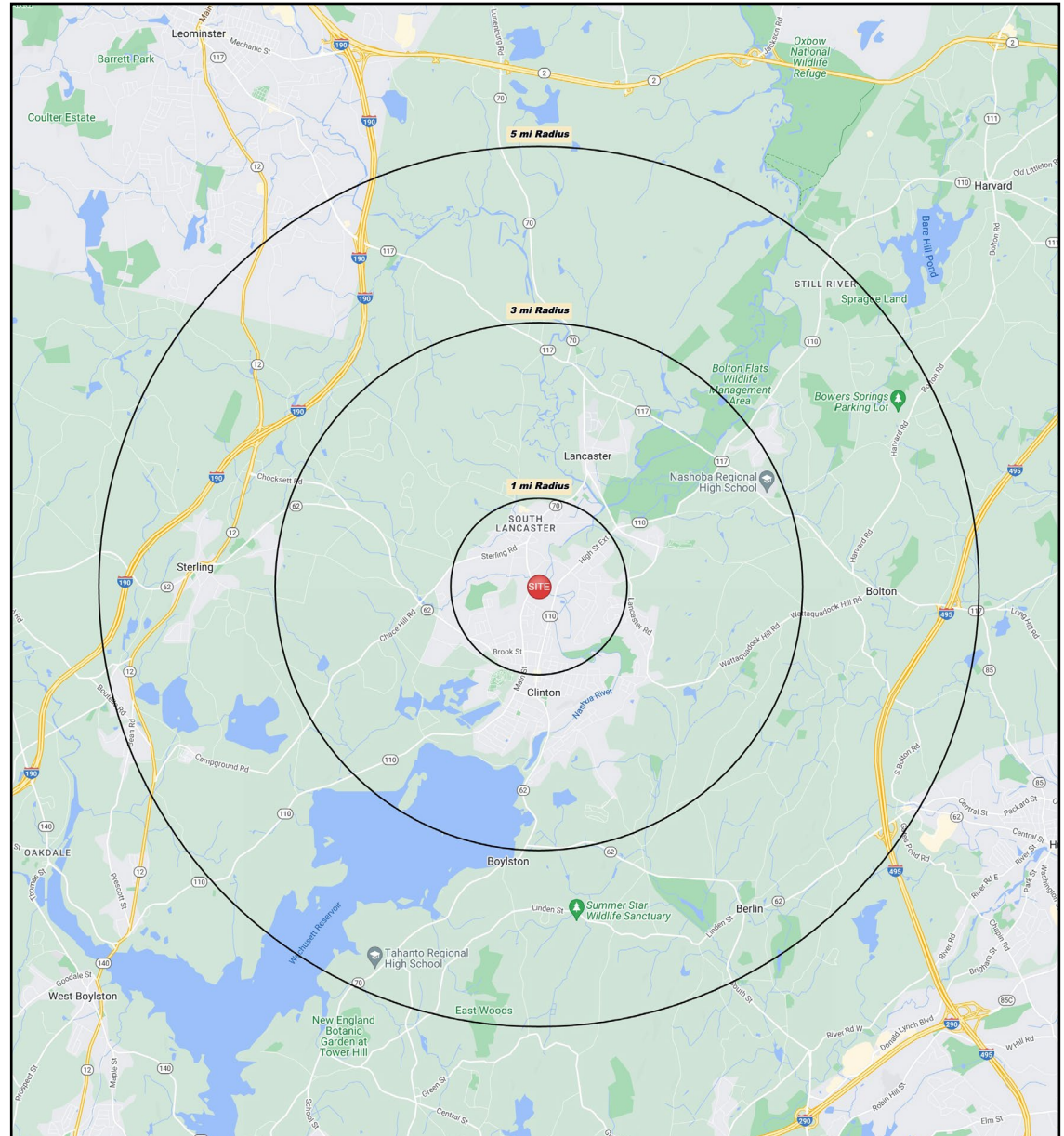
Daytime Population: 24,036

Median Age: 42.7



Average Household Income: **\$152,295**

Median Household Income: **\$119,648**



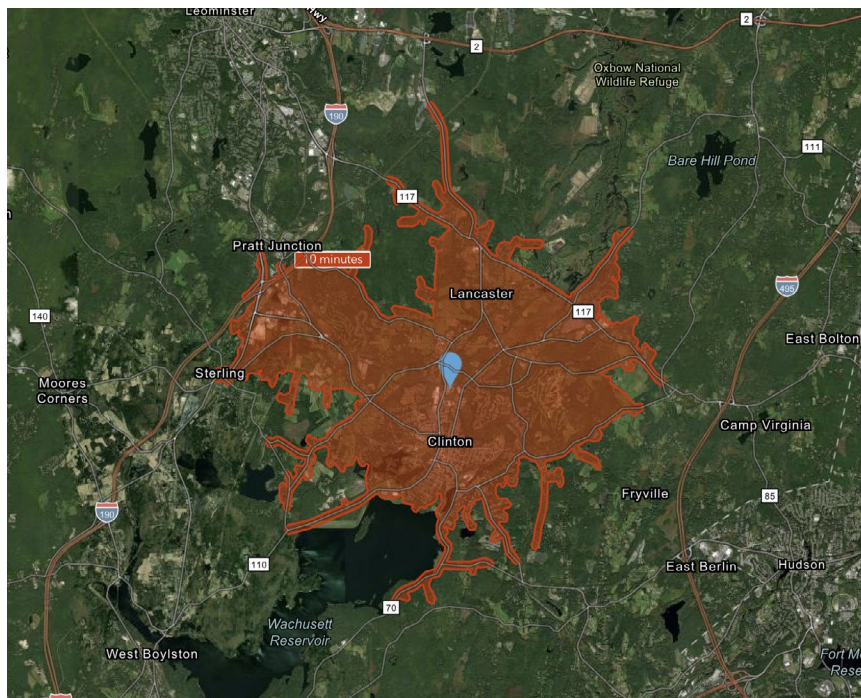
#### CHARTER REALTY

Information contained in this document has been reviewed and approved by Charter Realty; however, errors sometimes occur. Charter disclaims any warranty of any kind, expressed or implied, as to any matter whatsoever relating to this service. In no event shall Charter be liable for any indirect, special, incidental or consequential damages arising out of any use of or reliance on any content or materials contained herein.

# WOODRUFF PLAZA

1175 MAIN STREET | CLINTON, MA 01510

10 MINUTE DRIVE TIME



## KEY FACTS

22,856

Population

42.4

Median Age

\$90,579

Median Household Income

19,662

Daytime Population

## TAPESTRY SEGMENTS

Parks & Rec <i>2,537 households</i>	Savvy Suburbanites <i>1,832 households</i>	Front Porches <i>1,216 households</i>
<b>Socioeconomic Traits</b> More than half of the population is college educated. This is a financially shrewd market with a diverse workforce.	<b>Socioeconomic Traits</b> Residents are well educated, well read, and well capitalized. Families include empty nesters. Higher labor force participation rate at 67.9%.	<b>Socioeconomic Traits</b> Composed of a blue-collar workforce with a strong labor force participation rate.
<b>Household Types</b> Married couples, approaching retirement age.	<b>Household Types</b> Married couples with no children or older children; average household size is 2.85.	<b>Household Types</b> Young families w/ children, single parent families, singles living alone.
<b>Typical Housing</b> Single Family	<b>Typical Housing</b> Single Family	<b>Typical Housing</b> Single Family; Multi-units

### TOTAL RETAIL SALES

Includes F&B



\$238,599,325

### EDUCATION

Bachelor's Degree or Higher



46%

### OWNER OCCUPIED HOME VALUE

Average



\$441,744

## ANNUAL HOUSEHOLD SPENDING

\$3,960

Eating Out

\$2,378

Apparel & Services

\$7,396

Groceries

\$278

Computer & Hardware

\$7,925

Health Care

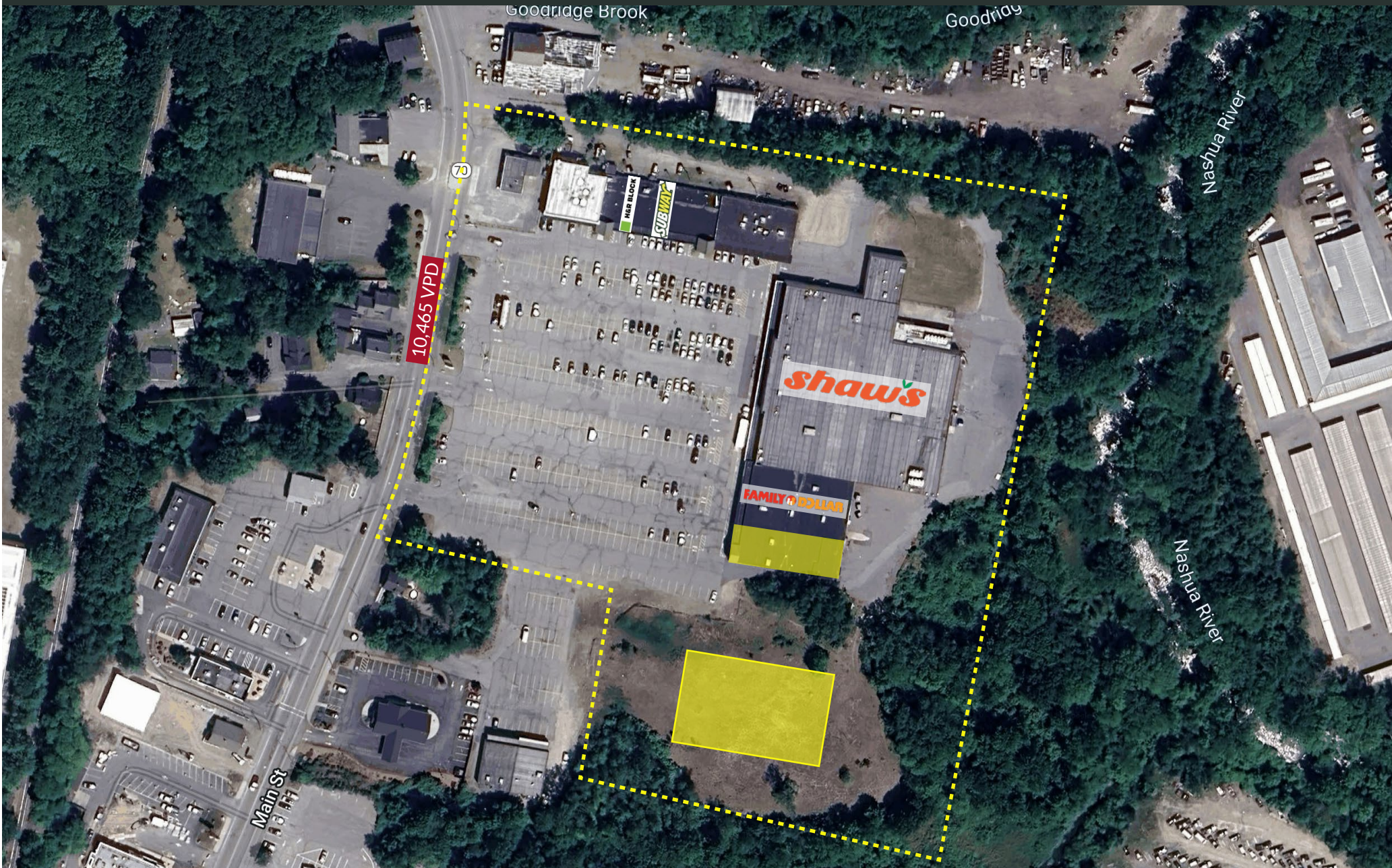


CHARTER REALTY

Information contained in this document has been reviewed and approved by Charter Realty; however, errors sometimes occur. Charter disclaims any warranty of any kind, expressed or implied, as to any matter whatsoever relating to this service. In no event shall Charter be liable for any indirect, special, incidental or consequential damages arising out of any use of or reliance on any content or materials contained herein.

# WOODRUFF PLAZA

1175 MAIN STREET | CLINTON, MA 01510



## CHARTER REALTY

Information contained in this document has been reviewed and approved by Charter Realty; however, errors sometimes occur. Charter disclaims any warranty of any kind, expressed or implied, as to any matter whatsoever relating to this service. In no event shall Charter be liable for any indirect, special, incidental or consequential damages arising out of any use of or reliance on any content or materials contained herein.

# WOODRUFF PLAZA

1175 MAIN STREET | CLINTON, MA 01510



## CHARTER REALTY

Information contained in this document has been reviewed and approved by Charter Realty; however, errors sometimes occur. Charter disclaims any warranty of any kind, expressed or implied, as to any matter whatsoever relating to this service. In no event shall Charter be liable for any indirect, special, incidental or consequential damages arising out of any use of or reliance on any content or materials contained herein.

# WOODRUFF PLAZA

1175 MAIN STREET | CLINTON, MA 01510



## CHARTER REALTY

Information contained in this document has been reviewed and approved by Charter Realty; however, errors sometimes occur. Charter disclaims any warranty of any kind, expressed or implied, as to any matter whatsoever relating to this service. In no event shall Charter be liable for any indirect, special, incidental or consequential damages arising out of any use of or reliance on any content or materials contained herein.